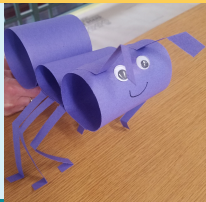


Walking Ant Puppet



taken in part from [kidscraftroom.com/walking-ant-craft/](https://www.kidscraftroom.com/walking-ant-craft/)

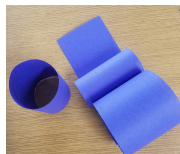
Supplies Provided

Construction Paper
Template for ant pieces
Eye Stickers
Jumbo Craft Stick

Supplies From Home

Marker
Scissors
Glue

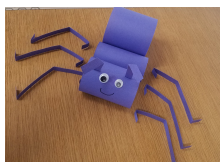
The ant's body is made up of three rectangular parts. The medium sized part is the head, the smallest is the thorax and the largest is the abdomen. Roll and glue each part into a tube and then glue them in order onto the rectangle base.



Cut out the ant's antennae and glue them onto the top of the head. You can bend them forwards too if you want to.

To give the ant puppet a face, use the eye stickers and draw a happy smile.

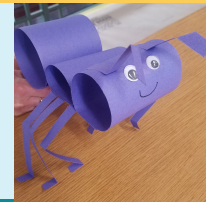
Each ant has 6 legs. Cut them out and fold them over to make a bend in the leg and a little foot. Glue the legs under the base of the thorax. (Middle body part.)



Turn your paper ant craft into a puppet that can be walked along by gluing a jumbo craft stick handle onto the bottom so it sticks out at the back.

Hold the craft stick handle and gently twist your wrist from side to side and move your hand forward to make the ant puppet walk along!

Walking Ant Puppet



taken in part from [kidscraftroom.com/walking-ant-craft/](https://www.kidscraftroom.com/walking-ant-craft/)

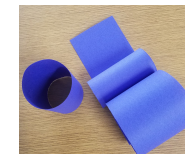
Supplies Provided

Construction Paper
Template for ant pieces
Eye Stickers
Jumbo Craft Stick

Supplies From Home

Marker
Scissors
Glue

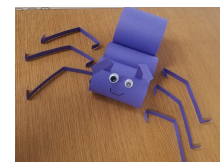
The ant's body is made up of three rectangular parts. The medium sized part is the head, the smallest is the thorax and the largest is the abdomen. Roll and glue each part into a tube and then glue them in order onto the rectangle base.



Cut out the ant's antennae and glue them onto the top of the head. You can bend them forwards too if you want to.

To give the ant puppet a face, use the eye stickers and draw a happy smile.

Each ant has 6 legs. Cut them out and fold them over to make a bend in the leg and a little foot. Glue the legs under the base of the thorax. (Middle body part.)



Turn your paper ant craft into a puppet that can be walked along by gluing a jumbo craft stick handle onto the bottom so it sticks out at the back.

Hold the craft stick handle and gently twist your wrist from side to side and move your hand forward to make the ant puppet walk along!